



# EFFICIENT THERMS

PRIVATE LIMITED



 **B-408, CHUGANI PRIDE, CHANGORABHATA  
RAIPUR CHHATTISGARH - 492013**

 **9977735705, 9691920002**

 **project@efficienttherms.com**

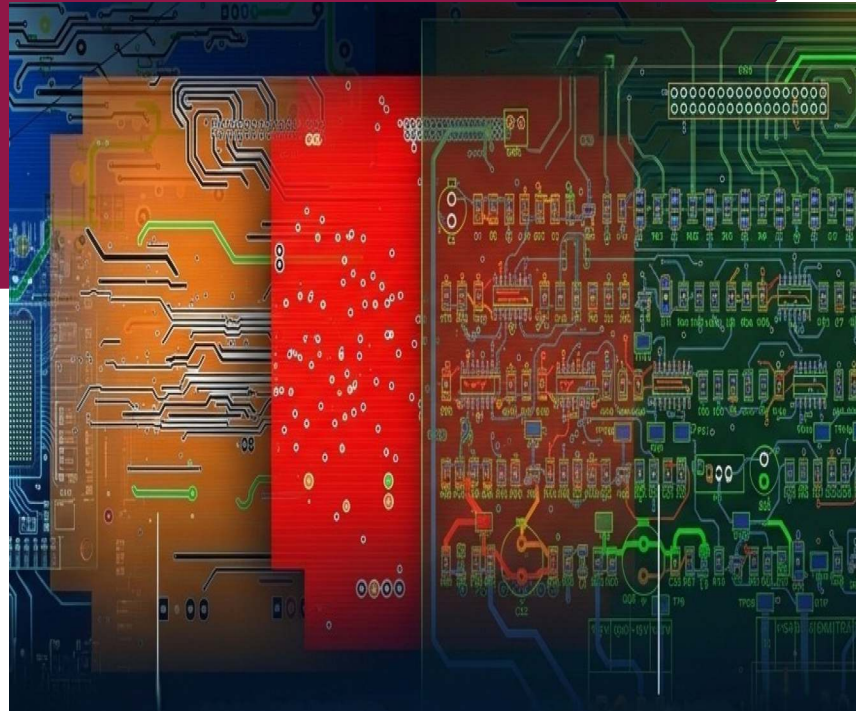
 **www.efficienttherms.com**



Visit us on Google

## About Us

Efficienttherm deals in Metal Heating & Melting Equipment and possesses the strength to meet Thermal Challenges through Induction. Empowered by top-of-the-line infrastructure facilities and a team of experts, we are catering to the needs of clients based all across the globe within the stipulated time frame. Within a very short span of time, we have successfully attained our markable position in the market.



# INDUCTION MELTING & HOLDING SYSTEMS

## SYSTEMS (500Kg - 30 Ton)

Deliver Precision with our Advanced Induction Melting Furnaces, meticulously designed to offer:

-  Superior Structural Rigidity
-  Low-Maintenance Design
-  Energy-Leader
-  PLC-Based Monitoring



Rigid Structure






PLC Based Touch-screen  
PLC Control Panel



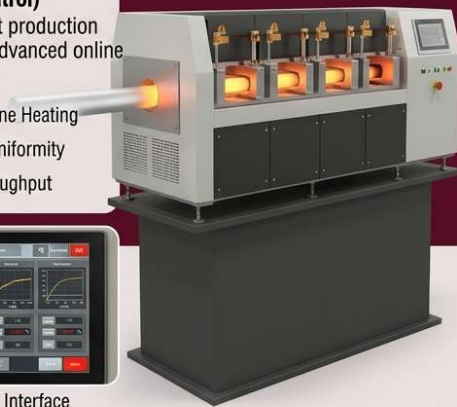
# INDUCTION ON-LINE BILLET HEATING

## ON-LINE HEATING (Multi-Zone Control)

Deliver consistent production quality with our advanced online heaters, offering:

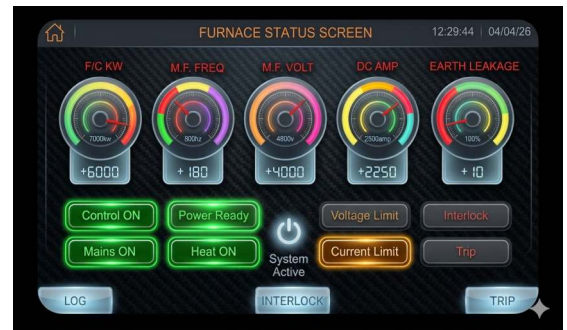
-  Rapid Multi-Zone Heating
-  Temperature Uniformity
-  Increased Throughput

## Billet Heaters

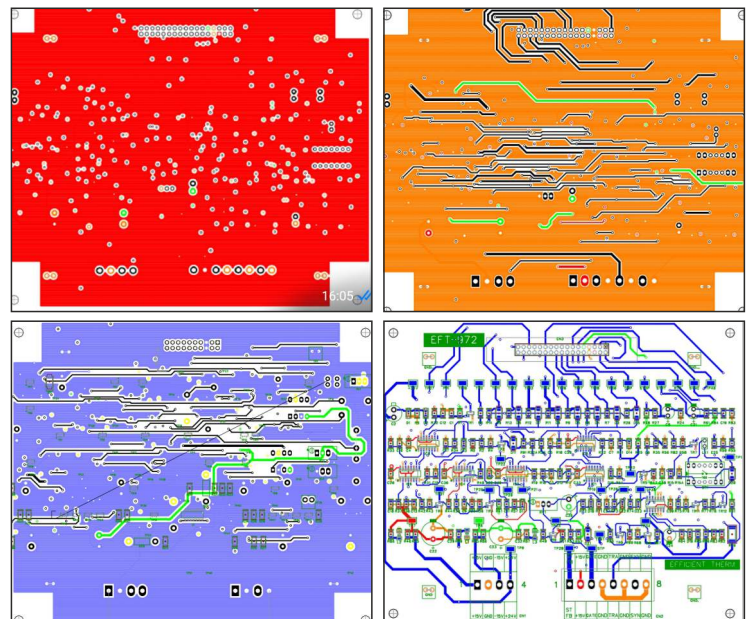


Advanced HMI Interface

# PLC Based Monitoring System



# Advance New Designed PCB



# POWER NAVIGATOR



- 6/12/24 pulse options
- Range available 300KW-12MW
- Frequency 150Hz-3KHz thyristor based.



**EFFICIENT THERMS**  
PRIVATE LIMITED

## Actual Heat Claims Throughout Month Average

Charge Yield	Average Energy Consumption at 1600 degrees tapping temp	Productivity for 10MW Power Supply
Scrap (96% yield)	520 kwh/t	18.8 tons/hr.
Sponge & Scrap Mix (89%yield)	590 kwh/t	16 tons/hr.
Mainly Sponge with some scrap and pig Iron (yield 84%)	650 kwh/t (Considering silica in pellets less than 8%)	13.2 tons/hr

## Melt Rate Kg./Hour at 1600 Degree

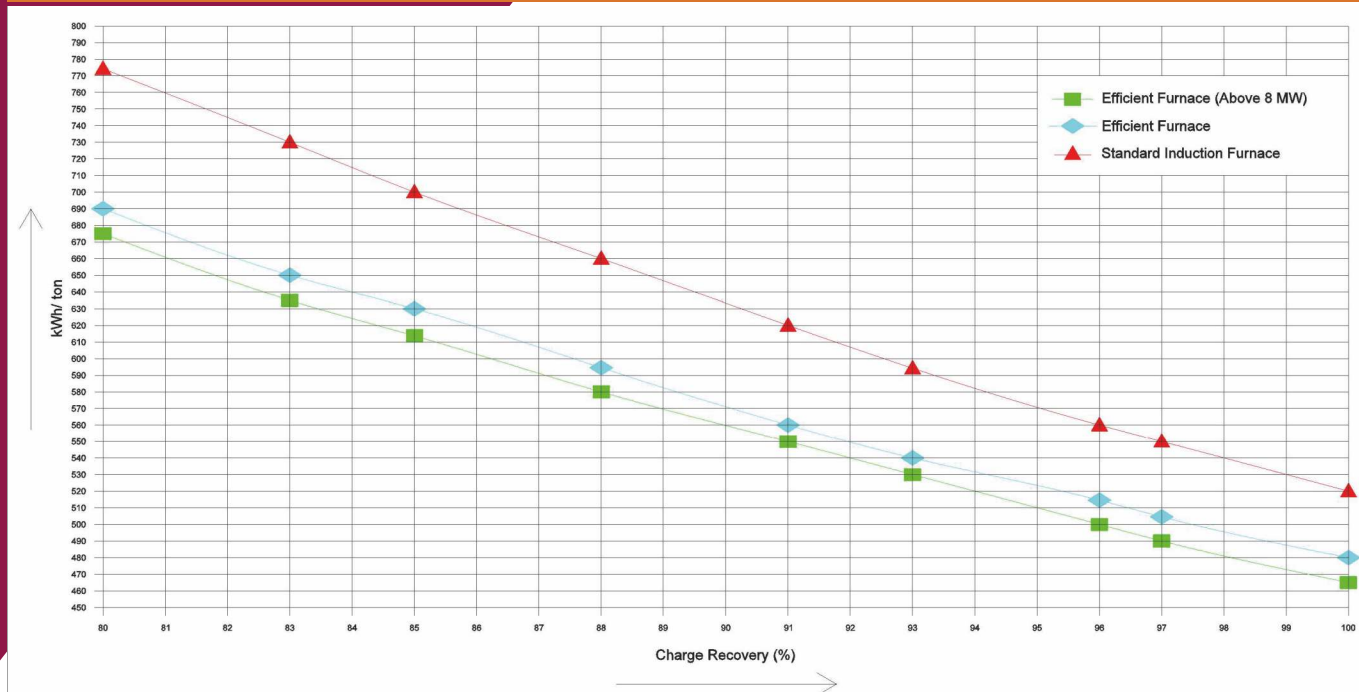
KW	STEEL	KW	STEEL
25	28	1250	2390
50	60	1500	2870
100	140	2000	3830
150	225	3000	5730
200	320	3500	6690
250	440	4000	7640
300	540	5000	9550
350	635	6000	11470
500	910	8000	15280
750	1440	10000	19100
1000	1910	12000	22920
1250	2390	15000	28650

**Better than Rivals**  
Redefining the Standard of 'Efficient'.

**Efficient Therm**  
HIGHEST OUTPUT AND ENERGY-RATIO

**Competitor**  
HIGHEST OUTPUT AND ENERGY-RATIO

## Energy Consumption vs Charge Mix Graph



**EFFICIENT THERMS**  
PRIVATE LIMITED



**YOUR TRUST, OUR FUEL**



### 1 MAHAMAYA STEEL INDUSTRIES (Raipur)

**Timeline :** IN A SPAN OF JUST 2 YEARS

**Success :** Commissioned 3 nos 17 MT F/C back to back by providing best unit consumption.

**Bonus :** Upgraded other make furnaces.



### 2 RESHMI GROUP (OMPL-9, W.B.)

**Timeline :** IN A SPAN OF JUST 1.5 YEARS

**Success :** Upgraded 4set 10MT F/C

Commissioned 2set 12MT F/C

back to back by providing best results and service support.



### 3 HITECH POWER & STEEL LTD (Tilda, Raipur)

**Timeline :** IN A SPAN OF JUST 1 YEAR

**Success :** Upgraded 4set 12Mt F/C. After getting best results, commissioned 2nos 12MT F/C more back to back.

### 4 GRAVITY IRON AND POWER PVT LTD (Tilda, C.G.)

**Timeline :** IN A SPAN OF JUST 6 MONTHS

**Success :** Got order of 4nos 15MT f/c after performing best in Gravity Ferrous pvt ltd (Raipur), where we upgraded 2nos MT 8 f/c with our latest design.



### 5 HINDUSTAN COILS LTD. (Raipur)

**Timeline :** IN A SPAN OF JUST 2 YEARS

**Success :** Upgraded 5 set Furnace from 10 Ton to 13.5 Ton with our latest design. After getting best result commissioned 2 nos complete 13.5 MT set of Furnaces back to back.



### 6 API ISPAT AND POWER TECH (P) LTD. (Raipur)

**Timeline :** IN A SPAN OF JUST 1 YEAR

**Success :** Upgraded other make 2set 20MT Furnace One by One After getting less unit consumption.



### 7 NUTAN ISPAT & POWER (P) LTD.

**Timeline :** IN A SPAN OF JUST 1 YEAR

**Success :** Upgraded other make 3set 20MT Furnace One by One After getting less unit consumption.

**THE PATTERN IS CLEAR : REPEAT ORDERS ARE EARNED THROUGH EXCEPTIONAL PERFORMANCE, INNOVATION (LATEST DESIGN) & DEDICATED AFTER SALES SERVICE**

A turnkey project is not supply of just the equipment on order, but quite a lot more than that which includes, and is not limited to, designing choreography of the entire plant for smooth material movement to selection of right equipment required for the plant and even indicating the type of manpower and man-hours required to execute the project. Project kick off is initiated at the site and indicating optimum space that would be required for setting up the plant. After assessment of the soil test report, civil layout and shed drawings are generated.



# OUR POWERHOUSE TEAM



**150+**

Work Employees  
(Skilled & Unskilled)

**30+**

Highly Qualified Sales, Service,  
R&D, Marketing Engineers



Best-in-Class  
Support



**Mr. Ajay Kumar Tiwari**  
Managing Director  
(Electrical Engineer)



**Mr. Sandip De**  
Managing Director  
(Electrical Engineer)

**SERVICE FIRST** : Our Commitment to Service Point of View Best in the Induction Melting Furnace Industries is Our Major Key of Success



**EFFICIENT THERMS**  
PRIVATE LIMITED



Efficient Therms

# OUR ESTEEMED CLIENTS

## A LEGACY OF PARTNERSHIP & TRUST

- ❖ INDIAN ISPAT WORKS PVT. LTD, RAIPUR C.G.
- ❖ HI-TECH POWER AND STEEL LTD. TILDA, C. G.
- ❖ RASHMI GROUP (OMPL -9)KULGACHIA ,WB
- ❖ GRAVITY IRON & POWER PRIVATE LIMITED. TILDA, C.G.
- ❖ MSM & SNDB-ISPAT&POWER-PVT-LTD. TILDA, C.G.
- ❖ GRAVITY FERROUS PRIVATE LIMITED. RAIPUR C.G.
- ❖ MIGHTY STEEL FLOW INDUSTRIES PVT. LTD, RAIPUR C.G.
- ❖ SHIV REAL ISPAT PVT. LTD., RAIPUR C. G.
- ❖ HINDUSTAN COILS. LTD., RAIPUR C.G.
- ❖ DEVI IRON. LTD. RAIPUR C.G.
- ❖ MARUTI FERRUS PVT LTD. RAIPUR C.G.
- ❖ SATYAM CASTING PVT. LTD. CUTTACK ODISHA
- ❖ PRAYASH STEEL, RAIPUR C. G.
- ❖ SUNIL SPONGE PVT. LTD. RAIPUR C.G.
- ❖ PRIME ISPAT LIMITED. RAIPUR C.G.
- ❖ TATVA METALLIK SERVICES, RAIPUR C.G.



**EFFICIENT THERMS**  
PRIVATE LIMITED